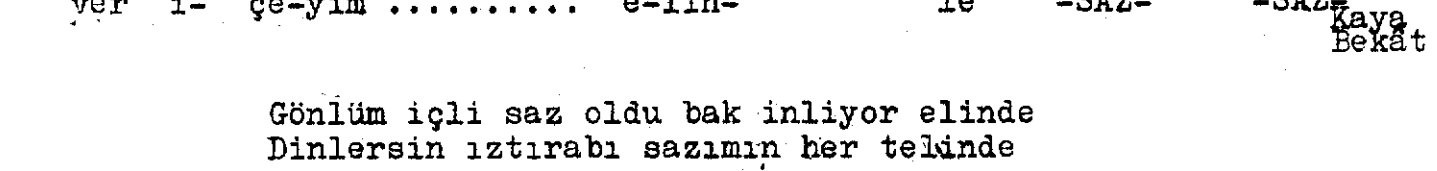
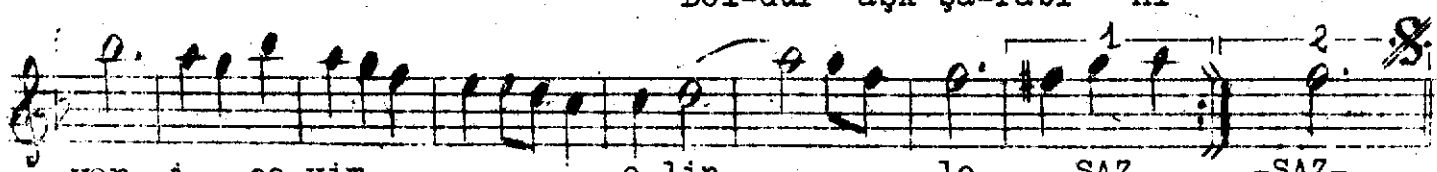
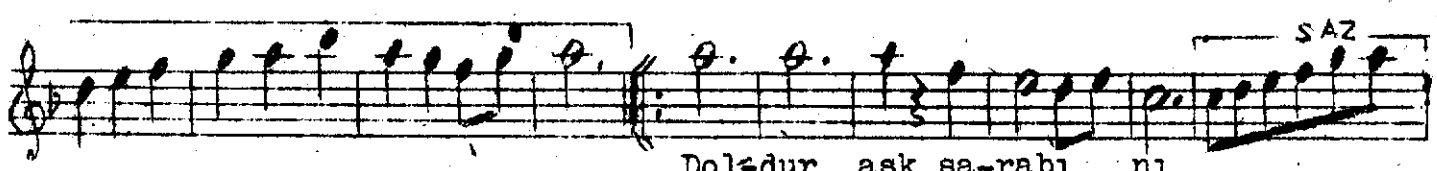
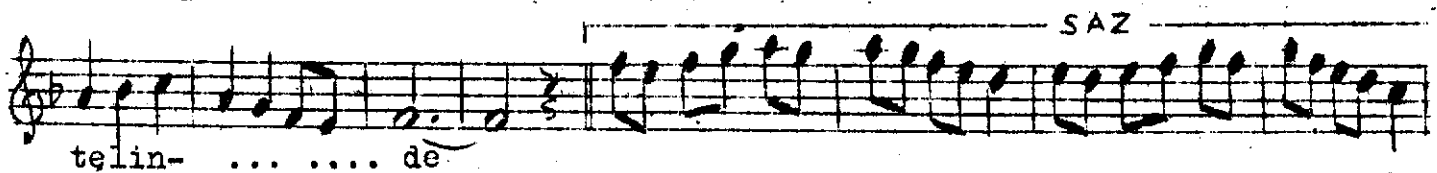
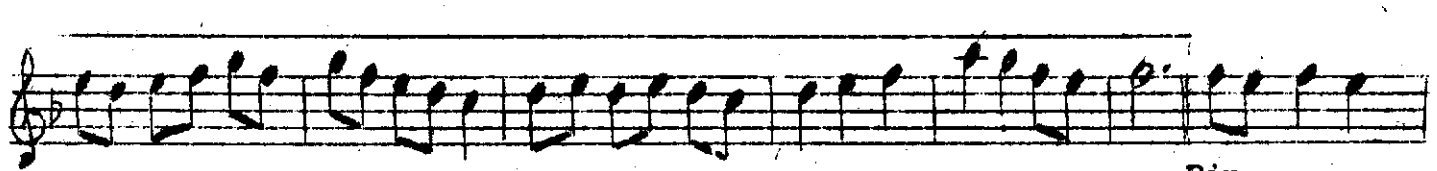
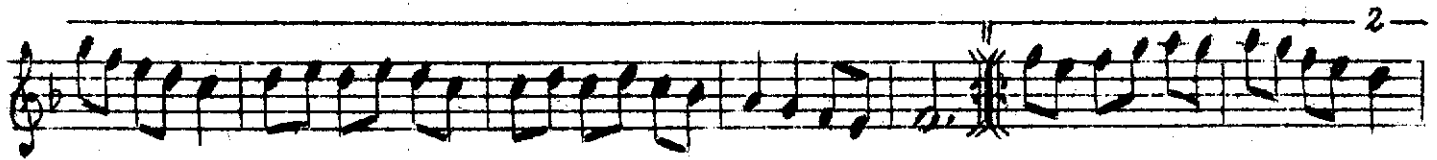
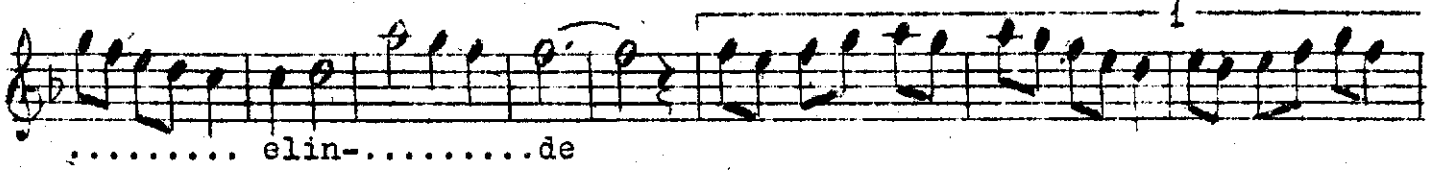
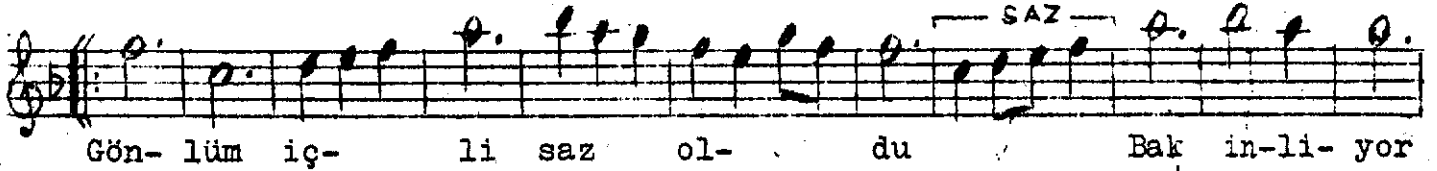


Usulü:Semaî

ACEMAŞIRAN ŞARKI
Gönlüm içli saz oldu

Güfte:İsmet ÇETİNSEL
Beste:Ali Ulvi BARADAN

Giriş:



Gönlüm içli saz oldu bak inliyor elinde
Dinlersin ıztırabı sazımın her telinde
Doldur aşk şarabını ver içeyim elinle
Dinlersin ıztırabı sazımın her telinde.

İsmet Çetinsel